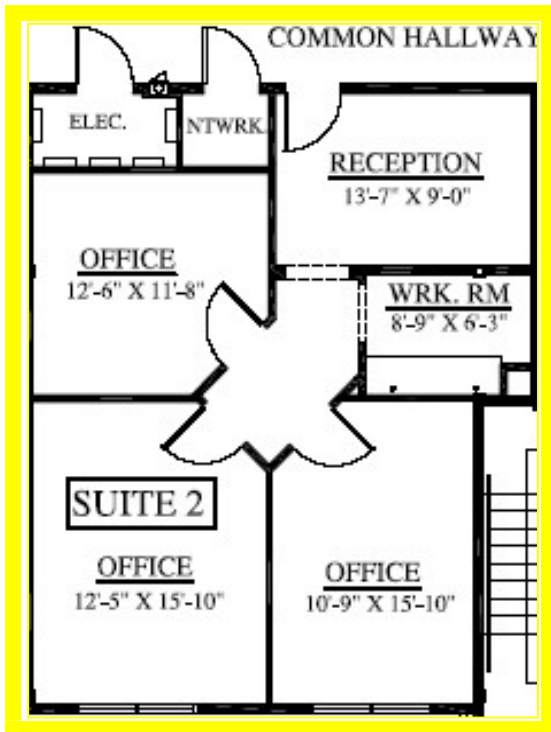




**LEASED**

*Suite 240*

- 638 sq ft
- 3 Large Offices
- Large Reception Area or Large Entry Area



**LEASED**

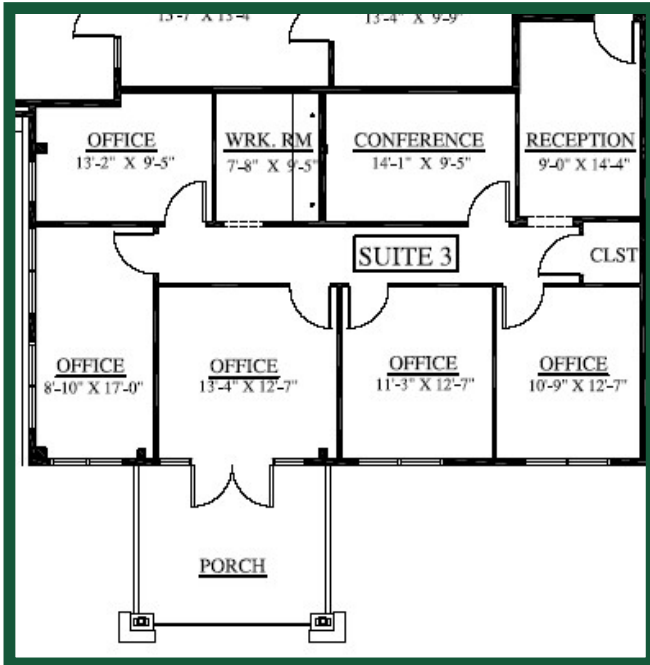
*Suite 260*

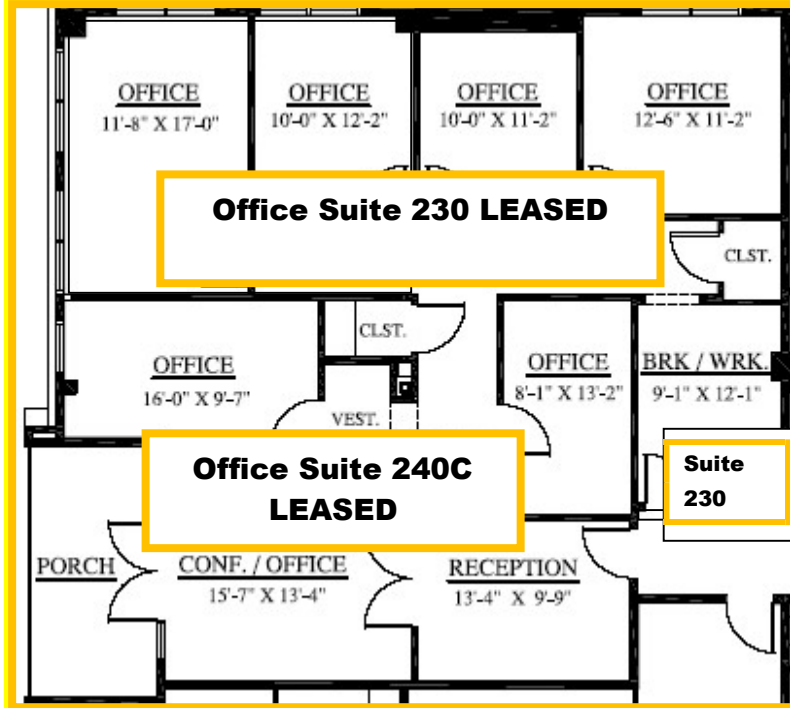
- 778 sq ft
- 3 Large Offices
- Large Reception or Large Entry Area
- Work Room or Storage Room

**LEASED**

### *Suite 215*

- *1,311 sq ft*
- *Large Reception*
- *Large Entry Area*
- *5 Large Offices*
- *Storage Closet*
- *One Conference Room*
- *Work Room or Storage Room*
- *Outdoor Terrace with the largest office*





**#230 & 240C  
Leased**

**Suites 230 & 240C**

- Suite 230 - 939 sq ft
  - Reception Area
  - Storage Closet
  - 4 Large Offices
- Suite 240C - 771 sq ft
  - Large Reception
  - Large Entry Area
  - 2 Large Offices
  - One Large Conference Room with Outdoor Terrace
  - Storage Closet